



**Mike Russett**

Email: Mike.Russett@ottawa.ca

**20200221**

**RE: East District Skate Park**

**Bob MacQuarrie Recreation Complex, 1490 Youville Drive, Ottawa**

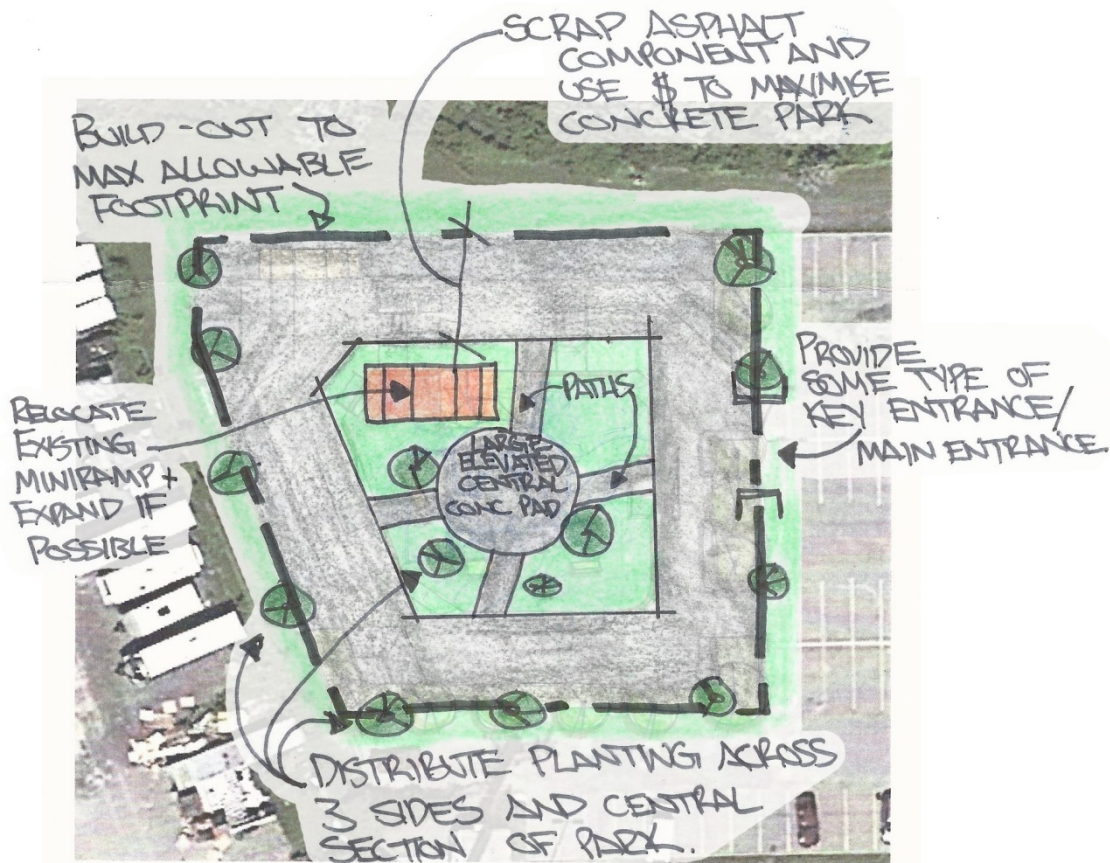
Hello Mr. Russett,

Following the community consultation for the Bob MacQuarrie Skate Park (also known as the East District Skate Park) on February 18th, members of the Ottawa Skateboard Association met and discussed the proposed options. It is the OSA's opinion, and the opinion of the undersigned, that a **modified Option 3** is the best park design to move forward with.

Outlined below are the modifications (including illustrations) we would like to see made to Option 3 and our reasoning behind them.

**Primary Concerns:**

- **Asphalt Resurfacing** - Given the limited budget available for the new park, we understand that incorporating the existing obstacles with resurfaced asphalt was intended as a cost saving measure. Based on our experience, mixed surface parks are a poor use of project funds as they begin to deteriorate after a single freeze-thaw cycle. This results in higher maintenance costs as, in order to maintain the usability of the park, consistent remedial repairs are required. **As such, we strongly advise against using asphalt of any kind in the park and instead recommend putting those monies towards additional concrete.**
- **Park Footprint/Boundaries** - As was noted during the consultation, we understand that any area "given up" during construction is likely to be lost should we ever require it in the future. Option 3 provides the best configuration for maximizing the park's footprint and thus retaining that land for future use by the park. **As such, we propose extending the concrete perimeter to the maximum allowable boundaries.**
- **Spectator's Area** - The current Option 3 does not provide a well resolved location for parents and spectators. Conflict between park users, parents, and spectators is a common occurrence and by providing a space that is central, slightly elevated, out of the user's way but still near enough for supervision would greatly reduce these conflicts. **As such, we propose providing a central embankment with a mix of soft and hard-scaping to act as a spectator area and gathering point.**



OPTION 3 - Circular Concrete Loop

Figure 1: Illustration depicting recommended modifications to proposed Option 3

- **Main Entrance** - The current Option 3 does not provide a clearly delineated entrance to the park which is important for wayfinding and orienting oneself in the space. **As such, we propose adding a clear “main” entrance to either the South or East sides of the park.**
- **Vegetation/Natural Shading** - The current Option 3 provides much needed, but seemingly limited amounts of natural vegetation, especially to the West. **As such, we propose increasing the number of trees and vegetation along the West/South/East perimeter and in the proposed Spectator’s Area.**
- **Utilizing Existing Components** - In consulting with local Orleans skaters, we have come across notable support for incorporating and expanding if possible, the existing miniramp. **As such, we propose incorporating the existing miniramp in the new central Spectator Area complete with a compacted, crushed gravel base or equivalent to ensure and maintain level installation.**

- **Use/Flow** - A major strength of Option 3 as it was presented and as modified is the layout provides a circular flow or navigation. A good circular flow allows the park to be used in either clockwise or counterclockwise directions and reduces user conflicts resulting from traffic jams and cross-traffic riding. **As such, we propose an obstacle layout that facilitates continuous usage in either direction.**

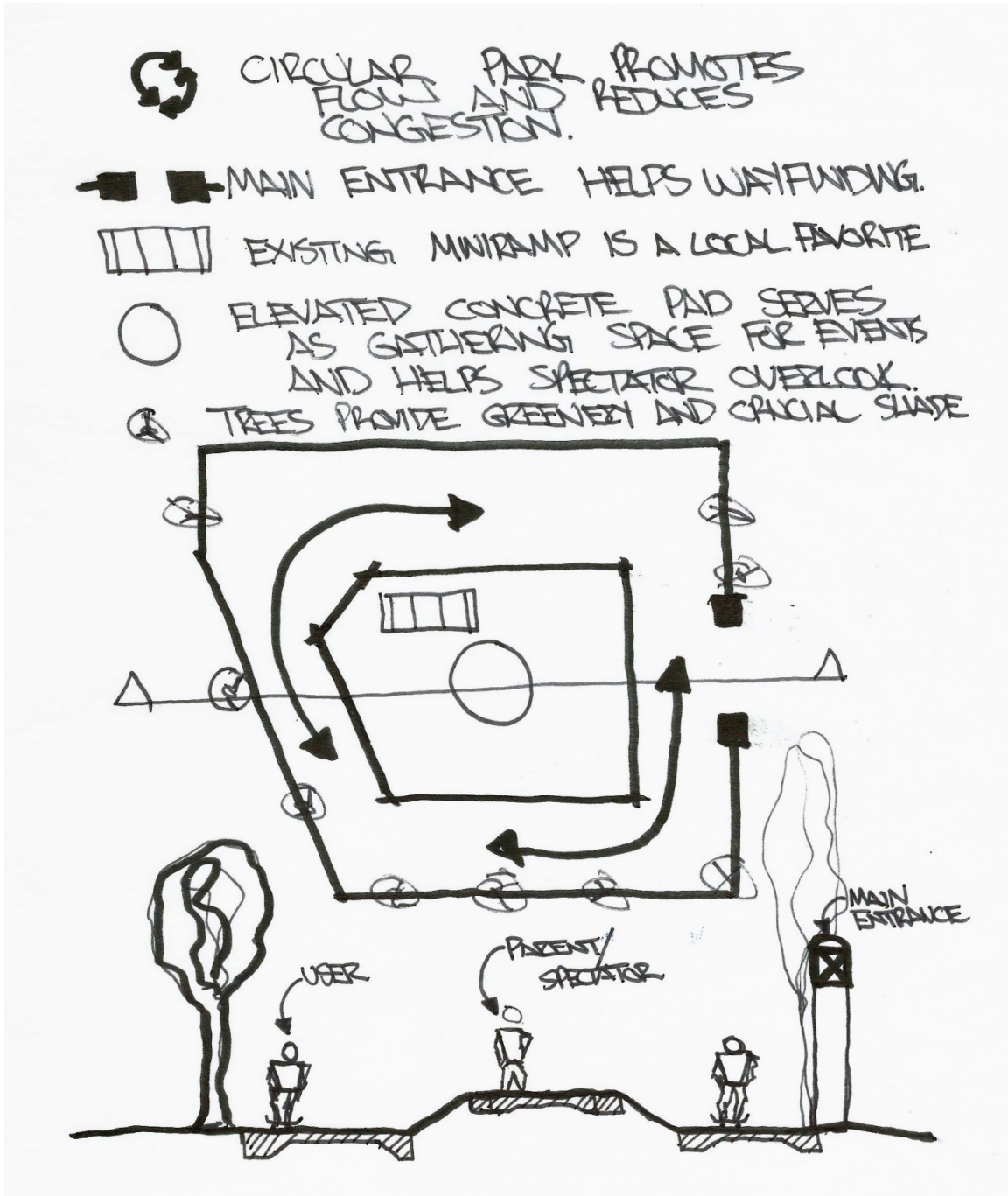


Figure 2: Illustration describing the design intent of the modifications to proposed Option 3

### Secondary Concerns:

- **Expansion/Future Considerations** - Given the current budget constraints, we believe that a modified Option 3 also provides the best layout for expansion in the future. The outer perimeter could remain entirely or largely in use while Phase 2 is undertaken in the central core.
- **Thematic Considerations** - As one of a number of skateparks currently under consideration, the OSA has been pushing

for the adoption of themed (plaza, transition, hybrid) parks which form part of a network across the City. **As such, we have, and continue to propose that this park be strongly plaza themed to complement transition and hybrid parks currently under consideration.**

- **User Skill Level** - As user demographics continue to change, providing a park that welcomes the novice, entertains the intermediate, and provides some challenge for the expert is a difficult balance to strike. **As such, we propose a park that includes approximately 20% novice terrain, 70% intermediate terrain, and 10% expert terrain**

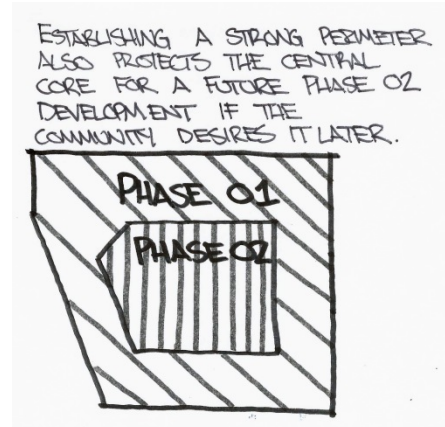


Figure 3: Potential Phase 01/02 split

Overall we believe the modifications listed here will serve to enhance the quality of Option 3 and make it the most desirable park design given the difficult budgetary and site conditions for this project. While this is no means an exhaustive list of technical details and requirements, we have tried to provide clear and concise feedback with a number of actionable items for the design team.

Speaking for myself, and on behalf of the Ottawa Skateboard Association board and volunteers, I can say we are excited to have this project back on track and look forward to assisting in any way possible to see this project through to completion.

Sincerely,

A handwritten signature in black ink, appearing to read 'Chris Cormier'.

Chris Cormier, Architect  
M.Arch., OAA, MRAIC

Ottawa Skateboard Association  
E: [chris@ottawaskateboard.ca](mailto:chris@ottawaskateboard.ca)